



057

GASOLINE CLEAR WATER PUMP

057

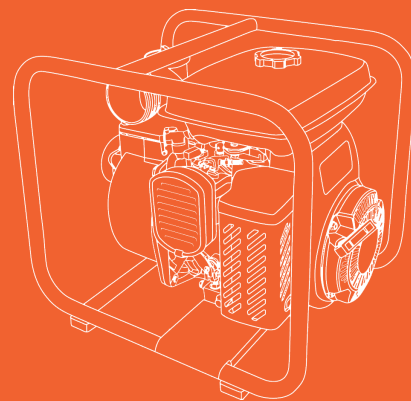
KEROSENE CLEAR WATER PUMP

057

FLEXIBLE SHAFT WATER PUMP

059

DIESEL CLEAR WATER PUMP



EXCALIBUR WATER PUMP

The clear water pump is used to provide continuous supply of water to industrial commercial establishments, houses, hospitals, aquariums, and agriculture.



SPRINKLER



WASHING



HIGHLIFT



FIRE FIGHTING



IRRIGATION



SHALLOW WELL



060

HIGH PRESSURE WATER PUMP

061

HIGH PRESSURE CAST IRON WATER PUMP

063

SEMI-TRASH WATER PUMP

063

CHEMICAL WATER PUMP

Clear Water Pump



Gasoline Water Pump

Model	SP-205	SP-305	SP-405	SP-405-1
Type	Self-priming centrifugal pump			
Suction*delivery (mm) (inch)	50*50 / 2*2	80*80 / 3*3	100*100 / 4*4	
Total Head (m)	46	32	28	28
Suction Head (m)	8	8	8	8
Max delivery volume (m³/h)	36	60	80	80
Mechanical seal	Ceramic Carbon			
Engine model	S20	S20	S28D	S28D
Fuel tank capacity (L)	3.8	3.8L	5.5L	12.5L
Starting system	Manual			
Packing size (L*W*H) mm	495*380*440		590*460*535	590*465*660
Net weight (KG)	26	28	40	42

Kerosene Water Pump

Model	SP-205K	SP-305K
Type	Self-priming centrifugal pump	
Suction*delivery (mm) (inch)	50*50 / 2*2	80*80 / 3*3
Total Head (m)	46	32
Suction Head (m)	7	7
Max delivery volume (m³/h)	36	60
Mechanical seal	Ceramic Carbon	
Engine model	S20K	
Fuel tank capacity (L)	3.4L	
Starting system	Manual	
Packing size (L*W*H) mm	495*380*440	
Net weight (KG)	27	28



● SFP50

● SFP80

Flexible Shaft Water Pump

Model	SFP50	SFP80
Discharge diameter (mm)	50	80
Flexible shaft (m)	6	6
Join type	PIN TYPE ; BUTTERFLY TYPE	
Max lift (m)	16	12
Max delivery volume (m³/h)	25	40
Engine model	S20	
Fuel tank capacity (L)	3.8	3.8
Starting system	Recoil starter	
Packing size (L*W*H) mm	515*380*515	
Net weight (kg)	22	24



Clear Water Pump

Gasoline Water Pump

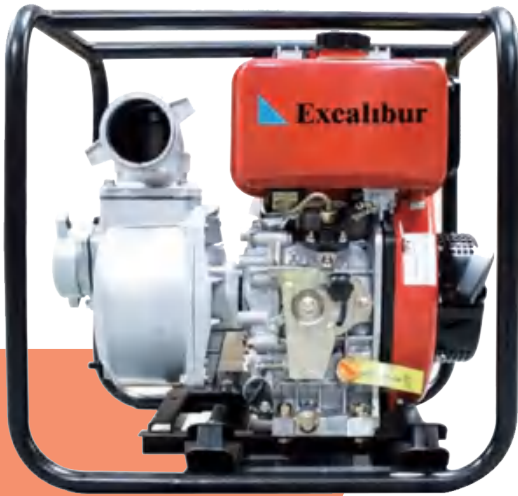
Model	SP-205B (E)	SP-305B (E)	SP-405B (E)
Type	Self-priming centrifugal pump		
Suction*delivery (mm) (inch)	50*50 / 2*2	80*80 / 3*3	100*100 / 4*4
Total Head (m)	46	32	28
Suction Head (m)	8	8	8
Max delivery volume (m ³ /h)	36	60	80
Mechanical seal	Ceramic Carbon		
Engine model	S200	S200	S390(E)
Fuel tank capacity (L)	3.6	3.6	6.5
Starting system	Manual Start/Electric Start		
Packing size (L*W*H) mm	470*380*450	510*380*450	635*455*545
Net weight (KG)	24	28	47



Kerosene Water Pump

Model	SP-205BK	SP-305BK
Type	Self-priming centrifugal pump	
Suction*delivery (mm) (inch)	50*50 / 2*2	80*80 / 3*3
Total Head (m)	46	32
Suction Head (m)	8	8
Max delivery volume (m ³ /h)	36	60
Mechanical seal	Ceramic Carbon	
Engine model	S200FK	S200FK
Fuel tank capacity (L)	3.6	3.6
Starting system	Manual start	
Packing size (L*W*H) mm	470*380*450	510*380*450
Net weight (kg)	24	28

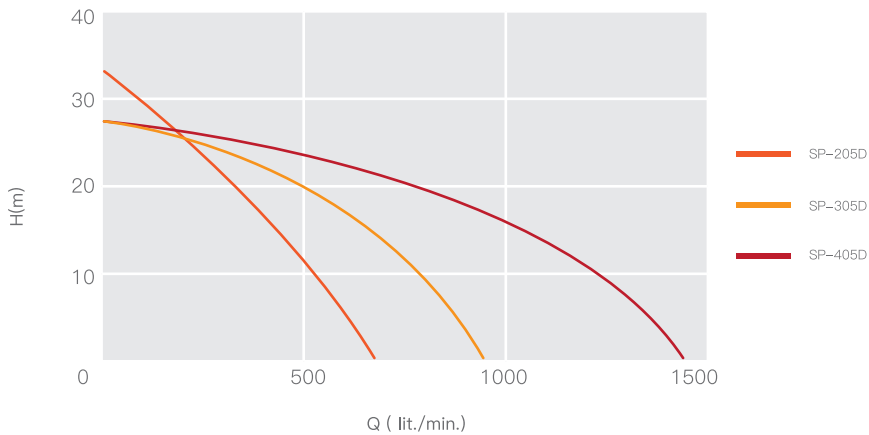
Diesel Clear Water Pump



● SP205D



SP605DE-1 ●



Diesel Clear Water Pump

Model	SP205D(E)	SP205D(E)-1	SP305D(E)	SP305D(E)-1	SP405D(E)	SP405D(E)-1	SP605DE-1	SP805DE-1
Type	Self-priming centrifugal pump							
Suction*delivery (mm) (inch)	50*50/2*2		80*80/3*3		100*100/4*4		155*155/6*6	200*200 / 8*8
Total Head (m)	46		32		25		15	25
Suction Head (m)	8		8		8		8	5
Max delivery volume (m ³ /h)	36		60		80		200	242
Mechanical seal	Ceramic Carbon							
Engine model	S173F(E)		S178F(E)		S186FA(E)		S192F(E)	SV292FE S2V80FE
Fuel tank capacity (L)	2.5	12.5	3.5	12.5	5.5	12.5	12.5	25 15
Starting system	Manual Start /electric start						electric start	Electric start
Packing size (L*W*H) mm	520*420*380	535*465*615	570*465*560	590*465*660	690*535*560	690*510*720	785*600*790	1045*715*980 1020*780*870
Net weight (KG)	32	38	45	50	64	70	130	180 170



● SHP20D

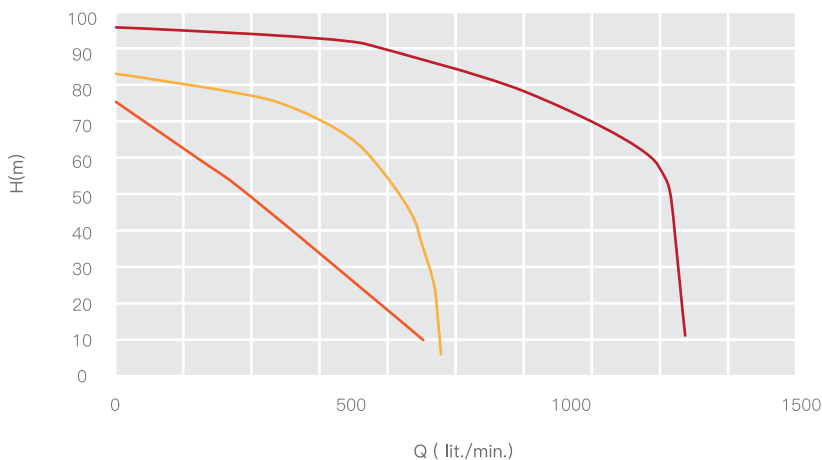
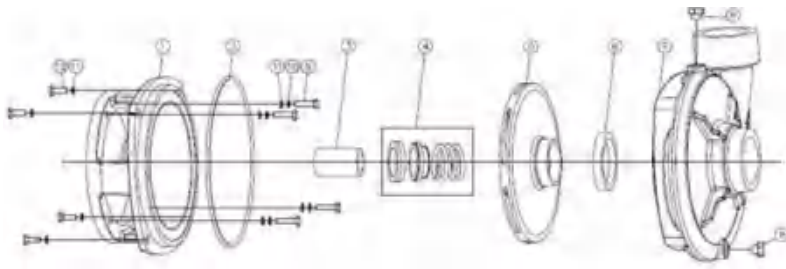
The high pressure water pump is designed to push water long-distance or great high, making it ideal for sprinkler systems, remote area firefighting and washing down equipment.



High Pressure Water Pump

Model	GASOLINE TYPE			DIESEL TYPE		
	SHP-15B	SHP-20B	SHP-30B	SHP-15D	SHP-20D	SHP-30D
Type	Self-priming centrifugal pump					
Suction (inch)	1*1.5	1*2	1*3	1*1.5	1*2	1*3
Delivery (inch)	1*1.5 inch+2*1 inch	1*2inch+2*1.5 inch	1*3 inch	1*1.5 inch+2*1 inch	1*2inch+2*1.5 inch	1*3 inch
Total Head (m)	55	65	80	55	65	80
Suction Head (m)	7	7	7	7	7	7
Max delivery volume (m ³ /h)	20	30	40	20	30	40
Mechanical seal	Ceramiccarbon					
Engine model	S200F 6.5hp		S390F 13hp	S173F(E)	S178F(E)	S186FA(E)
Fuel tank capacity (L)	3.6	3.6	6.5	2.5	3.5	5.5
Starting system	Manual start			Manual start Or electric start		
Packing size (L*W*H) mm	535*490*465	510*380*450	620*535*545	520*420*380	570*465*560	690*535*560
Net weight (kg)	30	28	50	32	45	64

High Pressure Water Pump



- SHP50DEI
- SHP80DEI
- SHP100DEI

SHP80DEI

High Pressure Cast Iron Water Pump

Model	Diesel Type			Gasoline Type			Two Cylinders Diesel Type	
	SHP50DEI	SHP80DEI	SHP100DEI	SHP50BI	SHP80BI	SHP100BI	SHP80DEI	SHP100DEI
Type	Self-priming centrifugal pump						Self-priming centrifugal pump	
Suction*delivery (mm) (inch)	50*50/2*2	80*80/3*3	100*100/4*4	50*50/2*2	80*80/3*3	100*100/4*4	80*80	100*100
Total Head (m)	85	75	55	85	75	55	95	85
Suction Head (m)	6	6	6	6	6	6	6	6
Max delivery volume (m ³ /h)	35	42	120	35	42	120	101	120
Mechanical seal	Ceramic Carbon						Ceramiccarbon	
Engine model	S178F(E)	S186FA(E)	S192F(E)	S210F	S210F	S420F	SV292FE	
Fuel tank capacity (L)	3.5	5.5	5.5	3.6	3.6	6.5	6.5	
Starting system	Manual Start /electric start						Electric start	
Packing size (L*W*H) mm	580*490*570	580*490*630	585*490*635	470*380*450	510*38*450	620*535*545		
Net weight (KG)	50	68	75	35	42	55		

OPTIONAL CONFIGURATION



Bottom valve



Quick Connector



PIPE connector



● SHP25D(E)i

High Pressure Cast Iron Self Priming Diesel Water Pump

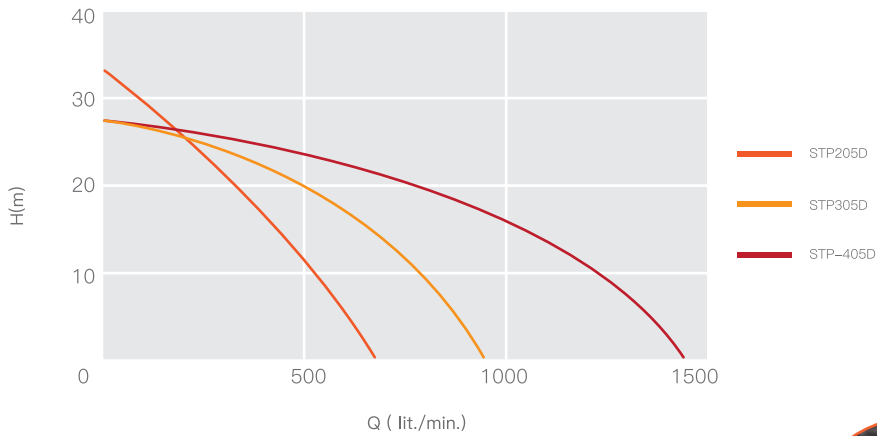
Model		SHP25D(E)i	SHP30D(E)i
Pump	Suction*delivery (mm) (inch)	65*65 / 2.5*2.5	80*80/3*3
	Total Head (m)	80	83
	Max. suction head (m)	8	8
	Max capacity (m ³ /h)	40	48
	Self-priming time (s/4m)	15	15
Engine	Model	S188F(E)	S192F(E)
	Bore*stroke (mm)	88*75	92*75
	Max output kW (hp)	8.2 (11)	9 (13)
	Engine Type	Single cylinder, 4-stroke , air-cooled, vertical , diesel engine	
	Starting System	Manual/ Electric start	
	Fuel tank (L)	3.5	2
Pump Set	N.W /G.W (kg)	72/79	77/84
	Packing Size L*W*H (mm)	620x520x580	620x520x580



FITTINGS OF A MACHINE



Water Pump



SWP205D ●

THE TRASH WATER PUMP IS ESPECIALLY SUITABLE FOR HEAVY-DUTY APPLICATIONS LIKE CONSTRUCTION SITES, SWIMMING POOL, WATER WAGONS, FLOOD CONTROL AND MANHOLE DEWATERING.

Semi-Trash Water Pump

Model	GASOLINE TYPE			DIESEL TYPE		
	STP205B	STP305B	STP405B	STP205D	STP305D	STP405B
Suction*delivery (mm) inch	2" / 50	3" / 75	4" / 100	2" / 50	3" / 75	4" / 100
Total Head (m)	46	32	28	46	32	28
Suction Head (m)	8	8	8	8	8	8
Max delivery volume (m ³ /h)	36	60	80	36	60	80
Mechanical seal	Ceramic Carbon					
Engine model	S200	S200	S390	S173F	S178F	S186FA
Fuel tank capacity (L)	3.5	3.5	6	3.5	3.5	5.5
Starting system	Manual Start or Electric start					
Packing size (mm)	485*385*380	510*385*425	635*455*545	520*420*380	590*500*535	690*535*560
Net weight (kg)	26	28	47	32	46	64



● SP50DC

Chemical Water Pump

Model		SP50DC	SP80DC
Pump	Suction*delivery (mm)/ (inch)	50*50/ 2*2	80*80/ 3*3
	Rated Head (m)	36	26
	Max. suction head (m)	8	8
	Max Delivery Volume (m ³ /h)	36	65
Engine	Model	S173F(E)	S178F(E)
	Engine Power	6HP	7HP
	Engine Type	Single cylinder, 4-stroke, air-cooled, vertical, diesel engine	
	Starting System	Manual/ Electric start	
	Fuel tank (L)	2.5	3.5
Pump Set	Continuous running time (h)	2	2.5
	N.W /G.W (kg)	34 / 37	50 / 53
	Packing Size L*W*H (mm)	570*420*530	610*460*560