



Compaction job is almost always required at a building site or construction project. Excalibur manufactures a variety of compaction equipment, such as plate compactor, tamping rammer, road roller, etc., to help get the job done easily.

Concrete equipment, such as concrete cutter, concrete vibrator, concrete mixer (also known as cement mixer), surface finishing screed, power trowel, etc. are also required in large contractor projects.

Choosing a right tool will help save labor, time and energy by more than half.



068 Plate Compactor

072 Tamping Rammer

074 Power Trowel

078 Concrete Cutter

080 Scarifying Machine

081 Concrete Vibrator

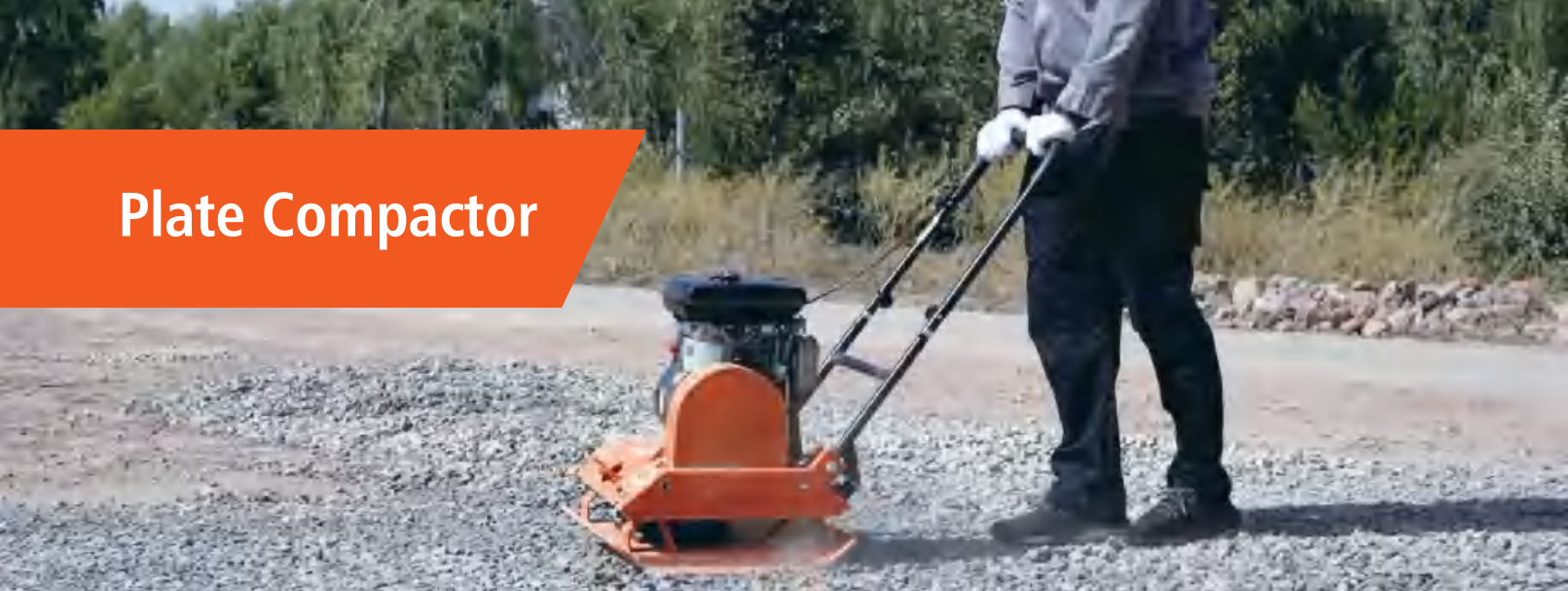
083 Cement Mixer

085 Surface Finishing Screed

087 Road Roller



Plate Compactor



Foldable handle with anti-vibration design



High Strength Steel, bottom plate with curved edges



Water Tank as optional device for asphalt use



Built-in Easy Transport Wheels

Features:

- ◆ The Plate Compactor is made of high strength steel, the bottom plate with curved edges guarantees the stable operation
- ◆ Hardened and enclosed pulley cover design protects the clutch and belt
- ◆ The strong protecting framework not only prevents the engine frame from impact, but also makes easier carry
- ◆ The foldable handle with unique design saves more storage space. The humanization design of the shock pad dramatically reduces the vibration of the handle, which increases the comfort of operation

Optional Device:

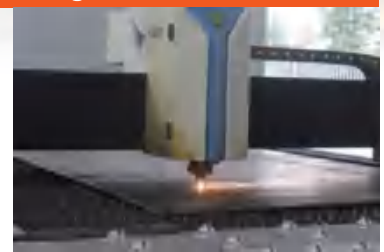
- ◆ The optional all-in-one moving wheels makes the plate compactor easier transport.
- ◆ Can be fitted with the water tank for the asphalt working area
- ◆ Can be fitted with polyurethane rubber pad for brick paving



Welding Robot



Laser Cutting



Bar Bending



Sheet Cutting

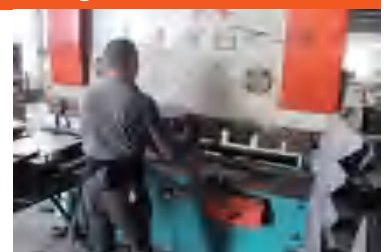


Plate Compactor

Model	SC-50
Plate size L*W (mm)	515*300
travel speed (m/min)	15-20
Limited grade ability	20
Vibration Frequency vpm(Hz)	5600
Centrifugal force (KN)	10
Engine model Option	Honda GX160/ Robin EY20/ Lifan 168F Diesel engine S173F/ Electric motor 2.2kw
Starting system	Recoil starter
Packing size (L*W*H) mm	740*360*550
Net weight (KG)	51



SC-50

Model	SC-60
Plate size L*W (mm)	560*370
travel speed (m/min)	20-25
Limited grade ability	20
Vibration Frequency vpm(Hz)	5600(90)
Centrifugal force (KN)	10
Engine model Option	Honda GX160/ Robin EY20/ Lifan 168F Diesel engine S173F/ Electric motor 2.2kw
Starting system	Recoil starter
Packing size (L*W*H) mm	870*420*650
Net weight (KG)	69



SC-60



SC-77

Model	SC-77
Plate size L*W (mm)	560*370
travel speed (m/min)	15-20
Limited grade ability	20
Vibration Frequency vpm(Hz)	5600
Centrifugal force (KN)	10.5
Engine model Option	Honda GX160/ Robin EY20/ Lifan 168F Diesel engine S173F/ Electric motor 2.2kw
Starting system	Recoil starter
Packing size (L*W*H) mm	850*530*670
Net weight (KG)	75



SC-77W

Model	SC-77W
Plate size L*W (mm)	560*475
travel speed (m/min)	15-20
Limited grade ability	20
Vibration Frequency vpm(Hz)	5600
Centrifugal force (KN)	13.5
Engine model Option	Honda GX160/ Robin EY20/ Lifan 168F Diesel engine S173F/ Electric motor 2.2kw
Starting system	Recoil starter
Packing size (L*W*H) mm	880*510*460
Net weight (KG)	80

Plate Compactor



Model	SC-90
Plate size L*W (mm)	560*450
travel speed (m/min)	15-20
Limited grade ability	20
Vibration Frequency vpm(Hz)	5600
Centrifugal force (KN)	13
Engine model Option	Honda GX160/ Robin EY20/ Lifan 168F Diesel engine S173F/ Electric motor 2.2kw
Starting system	Recoil starter
Packing size (L*W*H) mm	580*470*650
Net weight (KG)	80

Model	SC-100
Plate size L*W (mm)	700*450
travel speed (m/min)	15-20
Limited grade ability	20
Vibration Frequency vpm(Hz)	5600
Centrifugal force (KN)	20
Engine model Option	Honda GX160/ Robin EY20/ Lifan 168F Diesel engine S173F/ Electric motor 2.2kw
Starting system	Recoil starter
Packing size (L*W*H) mm	700*480*580
Net weight (KG)	97

Model	SC-120
Plate size L*W (mm)	635*480
travel speed (m/min)	15-20
Limited grade ability	20
Vibration Frequency vpm(Hz)	5600
Centrifugal force (KN)	20
Engine model Option	Honda GX160/ Robin EY20/ Lifan 168F Diesel engine S173F/ Electric motor 2.2kw
Starting system	Recoil starter
Packing size (L*W*H) mm	650*510*665
Net weight (KG)	90

Model	SC-140
Plate size L*W (mm)	620*500
travel speed (m/min)	15-20
Limited grade ability	20
Vibration Frequency vpm(Hz)	5600
Centrifugal force (KN)	30
Engine model Option	Honda GX160/ Robin EY20/ Lifan 168F Diesel engine S173F/ Electric motor 2.2kw
Starting system	Recoil starter
Packing size (L*W*H) mm	670*500*800
Net weight (KG)	110

Water Tank



Wheels



Engine Protecting Frame



Rubber Mat



Φ32mm tube frame provides strong protection for the engine and vibrator in construction site

Fordable handle with anti-vibration design, easy gear shifting because of rack and gear structure adopted

Rubber Mat availalbe and optional extension plates can be mounted



SC-160B

Features:

- ◆ The bearings are C&U brand,high precision, high reliable roller bearing
- ◆ We use rack and gear structure for gear shifting, ensuring easy operation
- ◆ The imported rubber is used for the anti-vibration system,which guarantees the damping effect
- ◆ Rubber Mat availalbe and optional extension plates can be mounted for high efficiency compaction result

Optional Device:

- ◆ The optional all-in-one moving wheels makes the plate compactor easier transport.
- ◆ Can be fitted with the water tank for the asphalt woking area
- ◆ Can be fitted with polyurethane rubber pad for brick paving

Model	SC-160B
Plate size L*W (mm)	702*497
travel speed (m/min)	20-25
Limited grade ability	20
Vibration Frequency vpm(Hz)	3840
Centrifugal force (KN)	35
Engine model Option	Honda GX200/ GX270/ Robin EY28D/ Lifan 168F/177F S178F/ Electric motor 3kw
Starting system	Manual / Electric start
Packing size (L*W*H) mm	700*500*900
Net weight (KG)	160

Model	SC-330B
Plate size L*W (mm)	880*650
travel speed (m/min)	20-25
Limited grade ability	20
Vibration Frequency vpm(Hz)	3600
Centrifugal force (KN)	50
Engine model Option	Honda GX390/ Lifan 420F Diesel engine S186FA/ Electric motor 3kw
Starting system	Manual / Electric start
Packing size (L*W*H) mm	1030*535*1010
Net weight (KG)	305

Tamping Rammer



Throttle Lever ensures smooth operation

4-stroke gasoline engine specially designed for rammers with easy starting, low noise operation

Adopted by cast aluminum case, easy for heat dissipation

Polyurethane ribbed rammer bellow ensures longer life



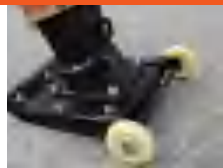
Features:

- ◆ The whole rammer is light in weight, with high impact force
- ◆ The design enables it easy for heat dissipation
- ◆ We use C&U bearings, and the key components of the rammers are of alloy steel material and heat treatment, making it longer life, and resistance for abrasion
- ◆ The rammers are tested by 500hours durable experiment to ensure their reliability

Optional Choice



Bottom Plate Handle



Rammer Wheels



Rammer Protecting Cover Type A



Rammer Protecting Cover Type B



Engine Protecting Frame A



Engine Guard Frame B



5HP Excalibur diesel engine 173F



Excalibur Robin engine EY20



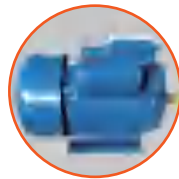
Subaru Robin EH12-2D



Honda GXR120



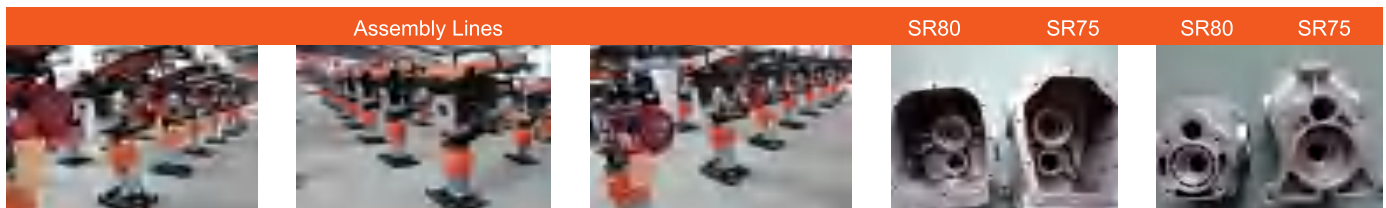
6.5HP LONCIN Gasoline Engine G200F



2.2KW Electric motor



Model	SR80		
Bottom plate size(mm)	300*280	300*280	300*280
Impact Frequency t/min	600-700	600-700	600-700
Jump Stroke	40-65	40-65	40-65
Impact force(KN)	12	12	12
Fuel tank capacity	2.8	2.8	2.8
Starting System	Recoil starter	Recoil starter	Recoil starter
Packing Size(L*W*H)mm	775X550X1120	775X550X1120	775X540X1120
Net weight(KG)	80	80	80
Engine Model	Honda GX160(5.5HP)	Excalibur S20(5HP)	Loncin G200F(6.5HP)



Tamping Rammer



5HP Excalibur diesel engine 173F



Excalibur Robin engine EY20



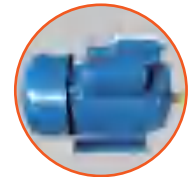
Honda GXR120



6.5HP LONCIN Gasoline Engine G200F



5.5HP Honda Gasoline Engine GX160



2.2kW electric moto

Model	SR75				
Bottom plate size(mm)	300*280	300*280	300*280	300*280	300*280
Impact Frequency t/min	640-680	640-680	600-700	600-700	600-700
Jump Stroke	55-85	55-85	40-65	40-65	40-65
Impact force(KN)	12	12	12	12	12
Fuel tank capacity	2.8	2.8	2.8	2.8	2.8
Starting System	Recoil starter	Recoil starter	Recoil starter	Recoil starter	Recoil starter
Packing Size(L*W*H)mm	760*540*1120	760*540*1120	760*540*1120	760*540*1120	760*540*1120
Net weight(KG)	75	75	80	80	80
Engine Model	Robin EH12-2D(4HP)	Loncin 149cc(4HP)	Honda GX100(3HP) GXR120(4HP)	Electric Motor 2.2kW	Diesel Engine S173F(5HP)



Height adjustable handle assures comfort control

Ingenius designed handle for easy accessible for the operator from the driving position

Easy lifting hook

Cast aluminum gearbox

Guard ring with safety design



Features:

- ◆ Height adjustable handle assures comfort control
- ◆ Ingenius designed handle for easy accessible for the operator from the driving position
- ◆ Cast aluminum gearbox makes the lifetime longer
- ◆ Guard ring with safety design with two optional types, and can also be customized

Optional Choice:

- ◆ Guard Ring Type
- ◆ Trolley Wheel
- ◆ Emergency Stop Switch

Guard ring type A

Guard ring type B

Trolley wheels for easy carrying

Lifting hook for easy transport (standard feature)



Emergency Stop Switch for convenient control

Engine available for Robin and Loncin brand

Electric Motor as power source



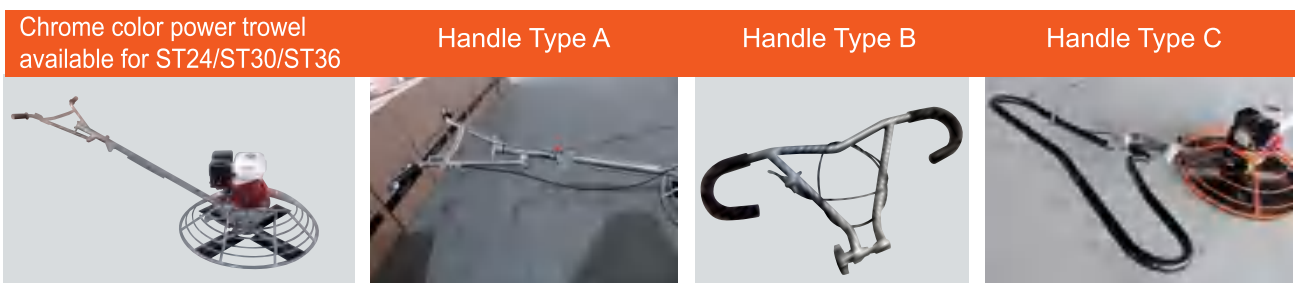
Power Trowel



Model	ST-24	ST-30	ST-36	ST-48
Trowel diameter (mm)	600	800	1000	1200
Number of blades	4	4	4	4
Driving Speed(rpm)	50-100	50-100	50-130	70-145
Blade Dimension (mm)	220*130	265*150	350X150	405X150
Packing size (L*W*H) mm	600*600*660	1000*1000*660	1000*1000*660	1200X1200X880
Net weight (KG)	60	75	75	80
Engine model	ROBIN EY20 HONDA GX160 LIFAN 200F ELECTRIC MOTOR	ROBIN EY20 HONDA GX160 LIFAN 200F ELECTRIC MOTOR	ROBIN EY20 HONDA GX160 LIFAN 200F ELECTRIC MOTOR	HONDA GX270 LIFAN G270F ELECTRIC MOTOR

Option:

- ◆ Chrome Power Trowel available, all color can be customized
- ◆ Handle Type A,B,C for choice
- ◆ Electric Motor as power source





Model	VS830
Dimension (mm)	1600*850*1080
Total Weight	280Kg
Blade Speed	150 rpm/min
Engine	B & S XR2100
Working diameter	1600mm
Fuel tank volume	8L
Control mode	Mechanical drive



Model	VS836
Dimension (mm)	2000(L)×1000(W)×1350(H)
Total Weight	360Kg
Blade Speed (max.)	150rpm ± 10rpm (when engine is 3600rpm)
Engine	HONDA GX690
Fuel type	High than 90# gasoline
engine lubricating oil	SAE30
Reduction box oil	Vanse special synthetic oil
Water tank & Fuel tank	20L
Control mode	Mechanical drive



TYPE	VS1046
MOTOR TYPE	BRIGGS & STRATTON
POWER	34HP
START MODE	ELECTRIC START
FUEL TYPE	HIGHER THAN 90# GASOLINE
FUEL TANK	40L
WANTER TANK	40L
DRIVE MODE	MECHANICAL DRIVE
WORKING DIAMETER	120CM*2
WORKING SPEED	140-170RPM
BLADE QUANTITY	5*2
BLADE MATERIAL	65Mn
BLADE SIZE	450MM(L)X200MM(W)
OUTLINE DIMENTION	2.54M*1.30M*1.52M
PACKING SIZE	2.65M*1.4,*1.6M
NETWEIGHT	480KGS
PACKING WEIGHT	550KGS



TYPE	VS1046H
MOTOR TYPE	BRIGGS & STRATTON
POWER	25.4KW
STARTMODE	ELECTRIC START
FUEL TYPE	HIGHER THAN 90# GASOLINE
FUEL TANK	25L
WANTER TANK	25L
DRIVE MODE	HYDRAULIC DRIVE
WORKING DIAMETER	120CM*2
WORKING SPEED	150RPM MAX
BLADE QUANTITY	5*2
BLADE MATERIAL	65Mn
BLADE SIZE	450MM(L)X200MM(W)
OUTLINE DIMENTION	2.54M*1.30M*1.52M
PACKING SIZE	2.65M*1.4,*1.6M
NETWEIGHT	580KGS
PACKING WEIGHT	680KGS

Concrete Cutter



Rotating handle adjusts cutting depth, ensures 17cm max cutting depth

13HP Honda GX390 engine is powerful and reliable

Spanners make installation work easier

350mm~500mm diameter blade can be accepted

40L water tank supplies water to cool both sides of the blade

3600rpm blade speed efficiently cuts concrete and asphalt



Features:

- ◆ The concrete cutter is well designed in structure for easy maintenance
- ◆ C&U bearings are adopted, and the key components are of alloy steel material and heat treatment, which prolongs the lifetime, making it anti-abrasion
- ◆ OEM design available, the water tank can be changed to plastic type
- ◆ Self propelling type available as an option choice
- ◆ High Intensity belt for stable cutting performance

Cutting depth can be adjusted by crank raising and lowering



Two water pipes



High Intensity belt for stable cutting performance

Optional: Timer Meter equipped for usage time





SCT-1

Model	SCT-1
Max cutting depth (cm)	9
Blade speed rpm	3600
Blade size cm (in)	30-35(12-14)
Depth adjustment	Handle rotation
Driving	Manual push
Water tank capacity	14L
Starting system	Recoil starter
Packing size (L*W*H) mm	910*480*810
Net weight (KG)	62
Engine model	Robin EY20 Gasoline Engine(5HP) Loncin G200F Gasoline Engine(6.5HP)



SCT-2

Model	SCT-2
Max cutting depth (cm)	17
Blade speed rpm	3600
Blade size cm (in)	40-50(16-20)
Depth adjustment	Handle rotation
Driving	Manual push
Water tank capacity	40L
Starting system	Manual / Electric start
Packing size (L*W*H) mm	1000*630*1050
Net weight (KG)	130
Engine model	Robin EY28D Gasoline Engine(8HP) Honda Engine GX390(13HP) Diesel Engine S186FAE(10HP)



SCT-3

Removable
water tank

Model	SCT-3
Max cutting depth (cm)	17
Blade speed rpm	3600
Blade size cm (in)	40-50(16-20)
Depth adjustment	Handle rotation
Driving	Manual push
Water tank capacity	40L
Starting system	Manual / Electric start
Packing size (L*W*H) mm	1000*630*1050
Net weight (KG)	140
Engine model	Robin EY28D Gasoline Engine(8HP) Honda Engine GX390(13HP) Diesel Engine S186FAE(10HP)

Concrete Cutter

Model	SCT-4
Max cutting depth (cm)	17
Blade speed rpm	3600
Blade size cm (in)	40-50(16-20)
Depth adjustment	Handle rotation
Driving	Manual push
Water tank capacity	40L
Starting system	Manual / Electric start
Packing size (L*W*H) mm	1250*540*1050
Net weight (KG)	160
Engine model	Robin EY28D Gasoline Engine(8HP) Honda Engine GX390(13HP) Diesel Engine S186FAE(10HP)



SCT-4



SCT-5

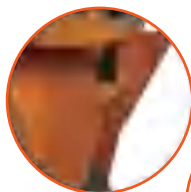
Model	SCT-5
Max cutting depth(cm)	17
Blade size cm (in)	40~50(16-20)
Depth adjustment	Handle rotation
Driving	Manual push
Water tank capacity	40L
Starting system	Recoil starter/ Electric starter
Net weight(kg)	150
Packing size (L*W*H) mm	1800*550*1050
Engine model	Diesel 186FA (10HP) Gasoline GX390(13HP)

Model	SCT-6
Max cutting depth(cm)	17
Blade size cm (in)	60(24)
Depth adjustment	Handle rotation
Driving	Manual push
Water tank capacity	40L
Starting system	Electric starter
Net weight(kg)	170
Packing size (L*W*H) mm	1800*550*1050
Engine model	V-twin Diesel Engine S292FE



SCT-6

Scarifying Machine



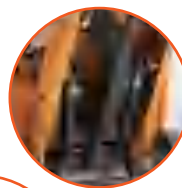
The main structure is made of 10 mm steel plate which is finished by laser-cut



Bearings are made by C&U, top bearing supplier in China, with longer service life



All the screws for key places are with Grade 10.9



The front wheel design and the pressure spring design above back wheels make the machine work more steadily



Cutting depth adjustment



The blade shaft is processed by thermal refining, to increase the hardness

The machine is a special multi-functional light pavement construction machinery, which is suitable for the concrete&asphalt ground. It can be used for renovation and reinforcement of bridge, repaving of old concrete pavement, local trimming of municipal road, working on high-speed rail and clearing traffic marking.

Model	SCF200	SCF250
Motor	Gasoline engine 6.5HP Diesel engine 7HP Electric motor	Gasoline engine 7-13HP Diesel engine 7-10HP Electric motor
Working Width	200MM	250MM
Net weight	60	70

Cage Assembly (A) for Concrete surfaces



Cage Assembly (B) for Asphalt surfaces



Concrete Vibrator



Model	SV
Engine Model	Robin engine EY20 (5HP)
	Honda engine GX160 (5.5HP)
	Diesel Engine S173F (6HP)
Coupling Type	Pin Type
	Malaysia Type
	Turkish Type
Fuel tank capacity (L)	3.8L
Starting system	Recoil Starter
Packing size(mm)	515*380*515mm
Net weight (KG)	22

Engine Options



Frame Options






Coupling Type Options



Vibrator Hose Options



Shaft Head Size	28mm	32mm	38mm	45mm	50mm	60mm
Shaft Length Options (m)	4M/ 6M/ 8M					
Vibration Head (mm)	28*470	32*470	38*470	45*470	50*470	60*470
Vibration/min	9800-12000					
Shaft roate speed	3000-3600					
Amplitude (m/min)	0.8	0.9	1.2	1.3	1.6	2
Weight of hose	14	16	18	19	20	21
Packing size of hose (mm)	870*660*80					

Model	Voltage	Power	Motor
 <p>SZNA-1</p>	220V	800W	Stator and rotor height: 35mm
	220V	900W	Stator and rotor height: 40mm
	220V	1000W	Stator and rotor height: 45mm
	220V	1200W	Stator and rotor height: 50mm
 <p>SZNA-2</p>	220V	800W	Stator and rotor height: 35mm
	220V	900W	Stator and rotor height: 40mm
	220V	1000W	Stator and rotor height: 45mm
	220V	1200W	Stator and rotor height: 50mm
 <p>SZNA-3</p>	220V	800W	Stator and rotor height: 35mm, Aluminum case
	220V	900W	Stator and rotor height: 35mm, Aluminum case
	220V	1000W	Stator and rotor height: 45mm, Aluminum case
	220V	1200W	Stator and rotor height: 50mm, Aluminum case



Vibrator Hose Options						
Shaft Head Size	25mm	25mm	35mm	35mm	35mm	35mm
Shaft Length Options (m)	1M	2M	1M	1.5M	2M	3M
Packing Method	5pcs/ctn	5pcs/ctn	5pcs/ctn	5pcs/ctn	5pcs/ctn	1pc/ctn

Cement Mixer



Powder-coat finish on the drum and frame adds durability

260L-500L capacity is well suit for small to medium size projects

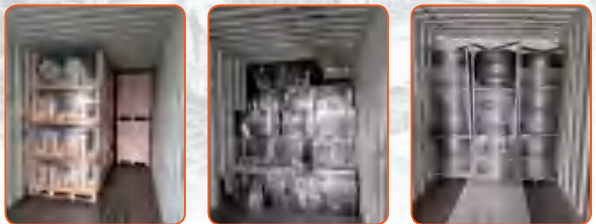
One-piece cast iron ring gear for longer life

Accept Honda GX200 Gasoline engine; Robin EY20 gasoline engine; and 178F diesel engine

17inch large wheels

Towable handle ensures easier transportation

More quantity can be loaded if separating the mixer into spare parts.



Model	SM260/SM350			SM400/SM450			SM500
Engine model	S178F	GX200	Electric Motor	S178F	GX200	Electric Motor	S186FA
Rated output KW (HP)	4.9 (6.6)	4.9(6.5)	2.2(3)	4.9 (6.6)	4.9(6.5)	2.2(3)	7.3(9.9)500
Drum Volume (L)	260/350			400/450			500
Productivity (m ³ /h)	6-10/10-14			14-18/16-20			18-22
No. of wheels	2/4			2/4			2/4
Speed of Mixing Drum (r/min)	30			30			30
Starting system	Manual/Electric start						
Driving	Manual push			Manual push			Manual push
Packing size (L*W*H) mm	1950*880*1125			1950*880*1225			1950*880*1225
Net weight (KG)	280/330			350/370			390

Cement Mixer



6.5HP Gasoline Engine (optional)



Classic Type

Model	SM80	SM100	SM120	SM130	SM140	SM160	SM180	SM200
Drum Volume (L)	80	100	120	130	140	160	180	200
Drum Speed (r/min)	33	33	33	30	30	28	28	28
Voltage(V)	110, 230, 380							
Motor Power(W)	550	550	550	550	550	650	850	850
Motor Speed(r/min)	2800	2800	2800	2800	2800	2800	2800	2800
Shape Size(mm)	1048*735*1202	1048*735*1227	1048*735*1266	1102*735*1249	1102*735*1284	1145*735*1342	1145*735*1367	1145*735*1396
Packing Size(mm)	740*580*330	740*580*380	740*580*430	790*640*380	790*640*440	830*680*430	830*680*440	830*680*470
Net Weight(kg)	41	42	43	47	48	53	55	57



SMT125
SMT140
SMT160
SMT180

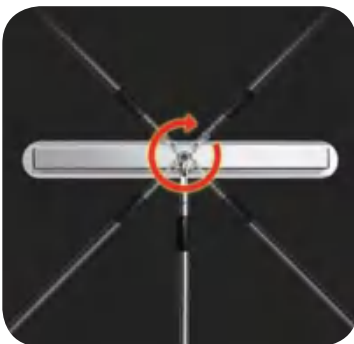
Barrow Type

Model	SMT100	SMT125	SMT140	SMT160	SMT180
Drum Volume (L)	100	125	140	160	180
Drum Speed (r/min)	26.6	30	30	30	30
Voltage(V)	110, 230, 380				
Motor Power(W)	370	550	550	650	850
Motor Speed(r/min)	2800	2800	2800	2800	2800
Shape Size(mm)	1280*620*880		1280*620*910		
Packing Size(mm)	740*580*380	760*640*380	760*640*430	800*680*430	800*680*440
Net Weight(kg)	42	46	49	51	53



Rack Type

Surface Finishing Screed



- ① Non-slip rubber handle
- ② Stainless steel handrail
- ③ Handle length can be flexible adjsut 1.2m-2m
- ④ 360° rotation of the handle
- ⑤ Scraper made og stanless steel

BLADE LENGTH	BLADE MATERIAL	BLADE WIDTH	G.W
80CM	Stainless steel	10CM	2.6KGS

Surface Finishing Screed



Throttle Controlling:
manually control the
vibrating pace



Gasoline S35 and GX35 en-
gine for option



Throttle Controlling:
manually control the
vibrating pace



SFS-1

Features:

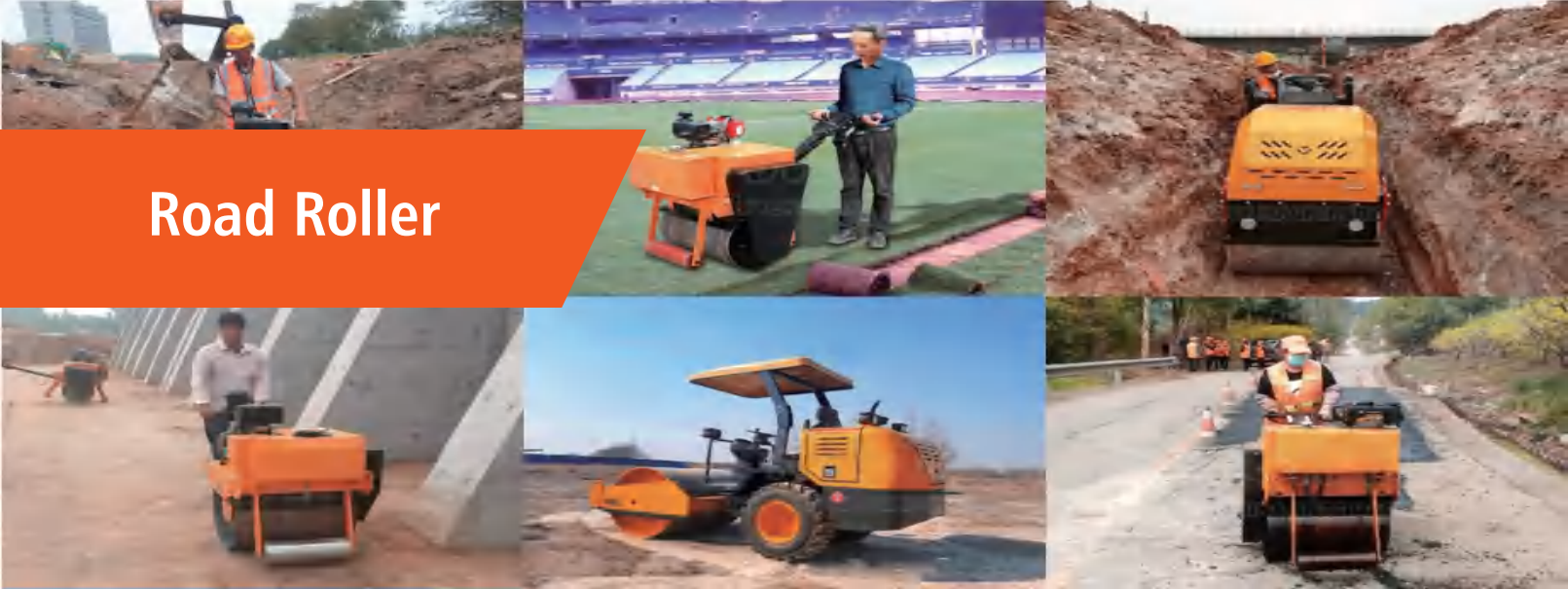
- ◆ High-performance screed is a reliable, durable choice for your concrete application
- ◆ Features a dependable 1.6 HP Honda GX35 4-cycle gas-powered engine and an aluminum alloy blade for durability
- ◆ Delivers 7,000 vibrations per minute
- ◆ Design allows for single-person operation
- ◆ Works with 8-, 10-, 12- and 14-ft. screed boards

Model	SFS-1
Engine	Air-cooled, 4-cycle
Engine Type	Honda GX35 or Chinese Engine
Power kW(HP)	1.2(1.6)
Net Weight kg(lb)	12.7(28.0)



Blade Size m(ft)	1.2(4)	1.8(6)	2.4(8)	3.0(10)	3.7(12)	4.3(14)	4.9(16)
Net Weight kg(lb)	2.9(6.4)	4.36(9.6)	5.81(12.8)	7.27(16)	8.72(19.2)	10.16(22.4)	11.61(25.6)

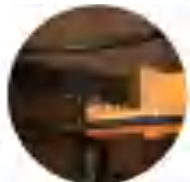
Road Roller



Honda Engine



Excalibur Engine



Flat Gear Adjustment Mechanism



JAPAN FYH SEIKO BEARINGS



Features:

- ◆ Authentic famous power, brand quality assurance, excellent performance more, start easy;
- ◆ Small operating radius, can work within a very narrow area;
- ◆ The use of domestic famous hydraulic pumps, motors, traveling around, easy to operate;
- ◆ Armrest the plane gear adjusting mechanism, flexible, adaptable without with height-person operation;
- ◆ Japan fyh seiko bearing transmission and japan mitsubishi(samsung) belt to ensure that the workperformance of the machine;
- ◆ Surface spray, beautiful appearance, rust corrosion resistance.

Model	SVR600H	SVR600D
Engine Brand	HONDA GX160	S173F
Engine Model	Gasoline & Single cylinder & Vertical & Four stroke & Overhead valves	Diesel & Single cylinder & Vertical & Four stroke & Air & Direct injection
Power	4.1kw	3.1kw
Rotating Speed	3600rpm	3600rpm
Fuel Capacity	3.6L	2.5L
Lubricating Oil	0.6L	0.75L
Start Up	Hand recoil / electric start	
Static Load	45n/cm	
Vibration Frequency	70hz	
Nominal Amplitude	0.6mm	
Exciting Force	15kn	
Walking Way	Two-way hydraulic chain drive	
Walking Speed	3.8km/h	
Theoretical Climbing Ability	30%	
Hydraulic Tank Capacity	15L	10L
Water Tank Capacity	22L	
Watering System	Gravity watering	
Wheel Size	Φ426*600mm	
Full Width	780mm	
Machine Length (Protective Frame Dumping)	1600mm	
Machine Height (Protective Stand Erect)	1060mm	
Package Size	1050*850*1200mm	
Weight	330kg	



DVR600H



DVR600D

Features:

- ◆ Equipped with brand-name power, superior performance, easy to start;
- ◆ Operating radius is small, in an extremely narrow area operations;
- ◆ Use of domestic brand-name hydraulic pumps, motors, before and after working, easy to operate;
- ◆ Lengthened armrest, steering convenience;
- ◆ Transmission system adopts Japan FYH seiko bearing and Japan MITSUBOSHI (three stars) V-belt, to ensure the performance of the whole machine;
- ◆ Surface spray, beautiful appearance, rust and corrosion resistance.

Model	DVR600H	DVR600D
Engine Brand	HONDA GX270	S178
Engine Model	Gasoline & Single Cylinder & Vertical & Four Stroke & Overhead valves	Diesel & Single Cylinder & Vertical & Four Stroke & Air & Direct Injection
Power	6.7kw	4.4kw
Rotating Speed	3600rpm	3600rpm
Fuel Capacity	5.9L	3.5L
Lubricating Oil	1.1L	1.1L
Start Up	Hand recoil / electric start	
Static Load	45n/cm	
Vibration Frequency	70hz	
Nominal Amplitude	0.6mm	
Exciting Force	20kn	
Walking Way	Two-way hydraulic chain drive	
Walking Speed	0~3.8km/h	
Theoretical Climbing Ability	30%	
Hydraulic Tank Capacity	18L	
Water Tank Capacity	20L	20L
Watering System	Gravity watering	Gravity watering
Wheel Size	Φ426*600mm*2	
Full Width	780mm	
Machine Length (Protective Frame Dumping)	2480mm	
Machine Height (Protective Stand Erect)	1820mm	
Package Size	1600*850*1900mm	
Weight	540kg	540kg

Road Roller



Features:

- ◆ Equipped with brand-name power, superior performance, easy to start;
- ◆ Operating radius is small, in an extremely narrow area operations;
- ◆ Use of domestic brand-name hydraulic pumps, motors, before and after working, easy to operate;
- ◆ Lengthened armrest, steering convenience;
- ◆ Transmission system adopts Japan FYH seiko bearing and Japan MITSUBOSH(three stars) V-belt, to ensure the performance of the whole machine;
- ◆ Surface spray, beautiful appearance, rust and corrosion resistance.

Model	SVR700H	SVR700D
Engine Brand	HONDA GX390 / GX270	
Engine Model	Gasoline & Single cylinder & Vertical & Four stroke & Overhead valves	Diesel & Single cylinder & Vertical & Four stroke & Air & Direct injection
Power	9.7kw	4.4kw
Rotating Speed	3600rpm	3600rpm
Fuel Capacity	6.5L	3.5L
Lubricating Oil	1.1L	1.1L
Start Up	Hand recoil / electric start	
Static Load	45n/cm	
Vibration Frequency	70hz	
Nominal Amplitude	0.6mm	
Exciting Force	20kn	
Walking Way	Two-way hydraulic chain drive	
Walking Speed	4.5km/h	
Theoretical Climbing Ability	30%	
Hydraulic Tank Capacity	15L	15L
Water Tank Capacity	20L	
Watering System	Gravity watering	
Wheel Size	Φ530*700mm	
Full Width	880mm	
Machine Length (Protective Frame Dumping)	2150mm	
Machine Height (Protective Stand Erect)	1870mm	
Package Size	1200*920*1920mm	
Weight	550kg	



Air-cooled diesel engine



HONDA gasoline engine



Water-cooled diesel engine



Imported variable piston pump



Hydraulic motor, double drum driving



Hydraulic steering



Hydraulic steering button



Vibration and lamp switch



Safety protection rod



Model	FYL-800	FYL-800C	FYL-800CS
Walk Speed		0-4km/h	
Gradeability		30%	
Drive Type		Hydraulic Transmission	
Vibration Type		Electromagnetic Clutch	
Static Linear Load		75N/cm	
Nominal Amplitude		0.5mm	
Vibration Frequency		70Hz	
Exciting Force		20kN	
Water Tank		26L	
Hydraulic Oil Tank		20L	
Engine Model		HONDA GX390 CF186F	
Power	13.0HP	9.0HP	9.0HP
Steel Wheel Size		Ø350X636mmX2	
Package Size		1510X870X1920mm	
Working Weight	780kg	800kg	800kg
Starting Mode		Hand and Electric	

Road Roller



Model	FYL-860	FYL-855
Walk Speed	0-5km/h	
Gradeability	30%	
Drive Type	Full Hydrostatic Drive	
Vibration Type	Electromagnetic Clutch	
Static Linear Load	55N/cm	
Nominal Amplitude	0.5mm	
Vibration Frequency	70Hz	
Exciting Force	20kN	
Water Tank	20L	15L
Hydraulic Oil Tank	19L	5L
Engine Model	CF186F	HONDA GX270 / CF178F
Power	9.0HP	9.0HP / 7.0HP
Steel Wheel Size	Ø540X740mm Ø425X675mm	Ø560X700mm Ø425X500mm
Package Size	1720X860X1400mm	1900X1100X1300mm
Working Weight	800kg	700kg
Starting Mode	Hand and Electric	

Air-cooled Diesel Engine



Imported Danfoss Pump, Variable Speed



Hydraulic Drive Motor

